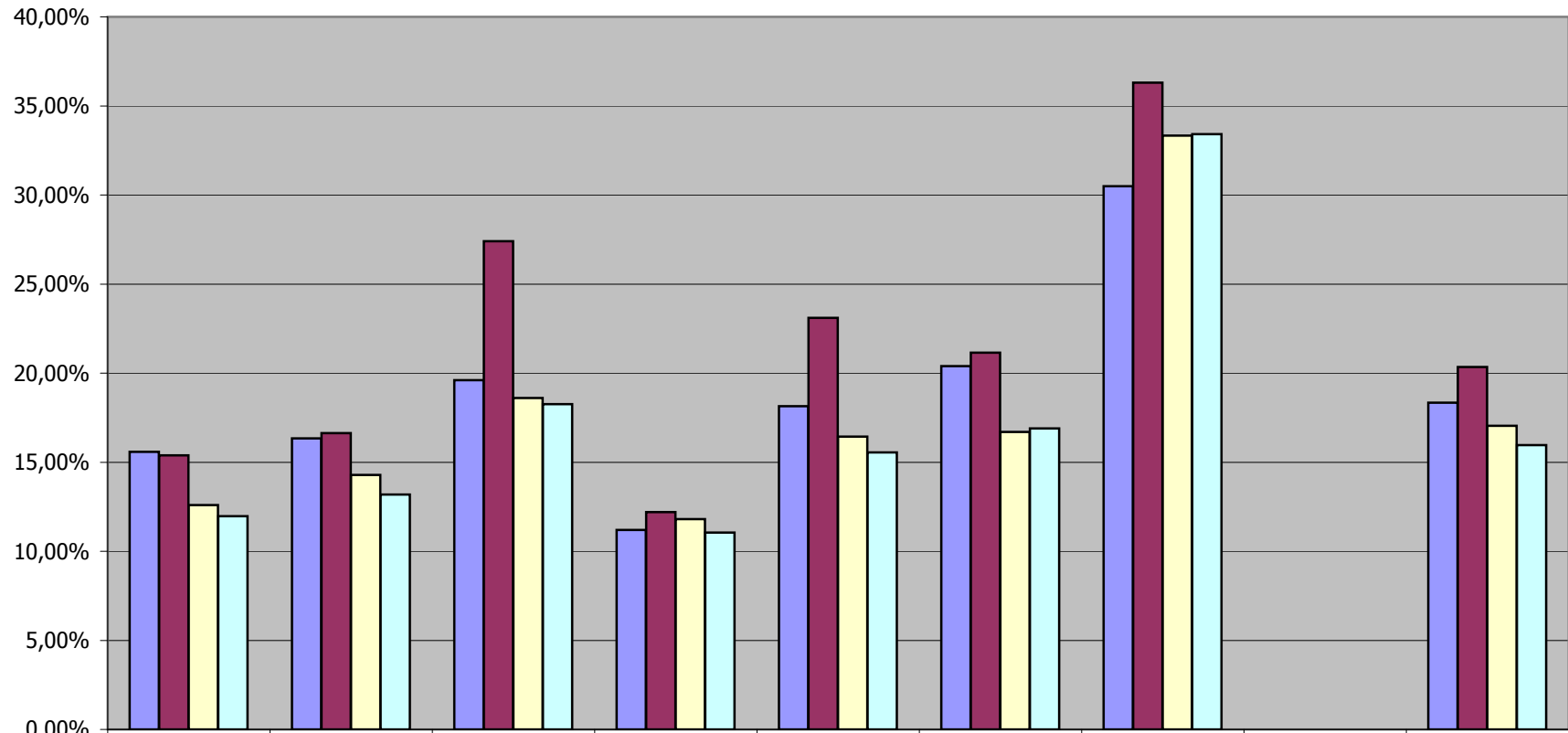


Pfarrgemeinderatswahlen Bayern 1998-2010

Stand: 11. März 2010



	Augsburg	Bamberg	Eichstätt	München-Freising	Passau	Regensburg	Würzburg		Bayern
■ Wahl-Beteiligung 1998	15,58%	16,34%	19,60%	11,20%	18,14%	20,40%	30,50%		18,34%
■ Wahl-Beteiligung 2002	15,39%	16,63%	27,40%	12,20%	23,11%	21,15%	36,30%		20,35%
■ Wahl-Beteiligung 2006	12,59%	14,28%	18,60%	11,80%	16,44%	16,70%	33,34%		17,05%
■ Wahl-Beteiligung 2010	11,97%	13,18%	18,26%	11,06%	15,55%	16,90%	33,42%		15,95%